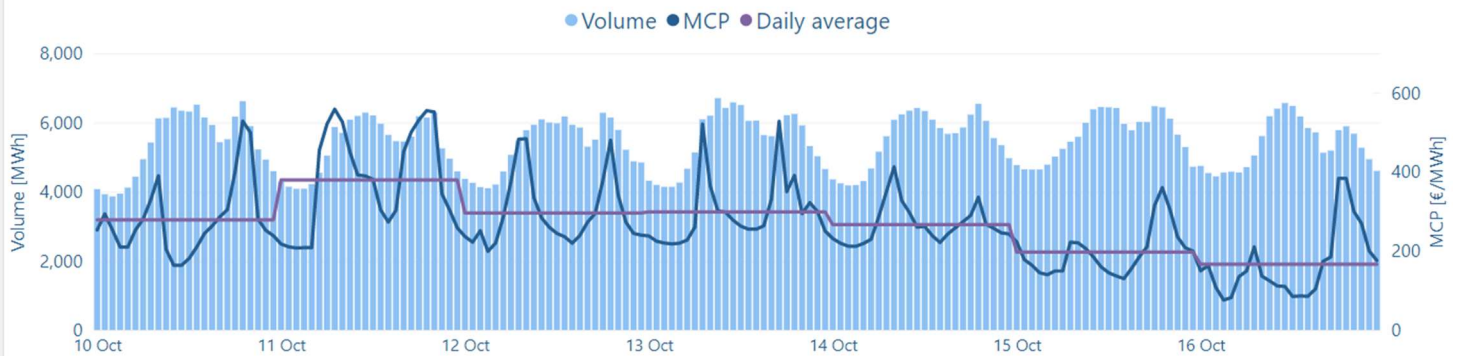
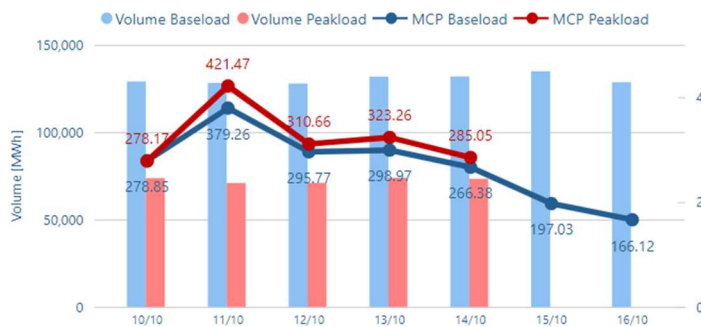


MCP	St. Deviation	Volume	Value
268.91 €/MWh	107.50	912 GWh	249.3 M€

Hourly MCP & Volume



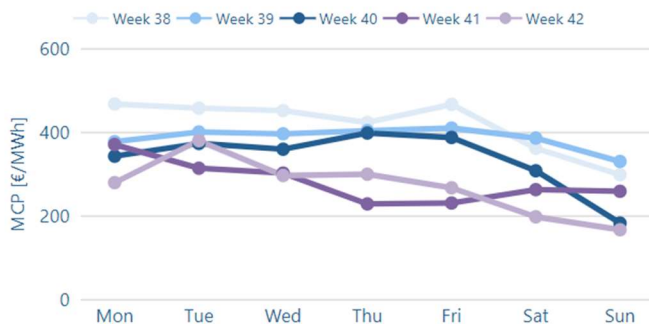
Daily MCP & Volume



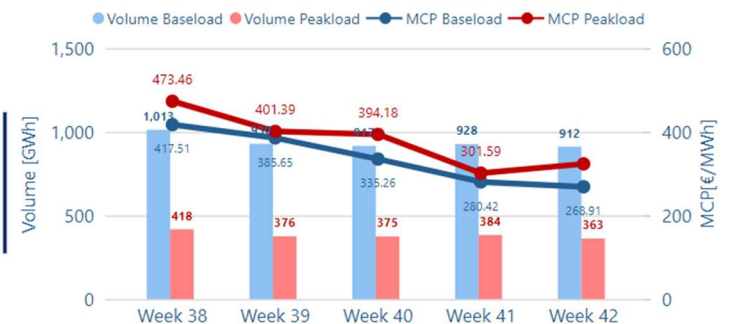
Data table

Delivery Date	MCP BL [€/MWh]	MCP PL [€/MWh]	Volume BL [MWh]	Volume PL [MWh]
10/10	278.85	278.17	129,004	73,660
11/10	379.26	421.47	128,231	70,886
12/10	295.77	310.66	127,854	70,967
13/10	298.97	323.26	131,764	73,907
14/10	266.38	285.05	131,904	73,302
15/10	197.03		134,871	
16/10	166.12		128,572	

MCP per Weekday



Weekly MCP & Volume



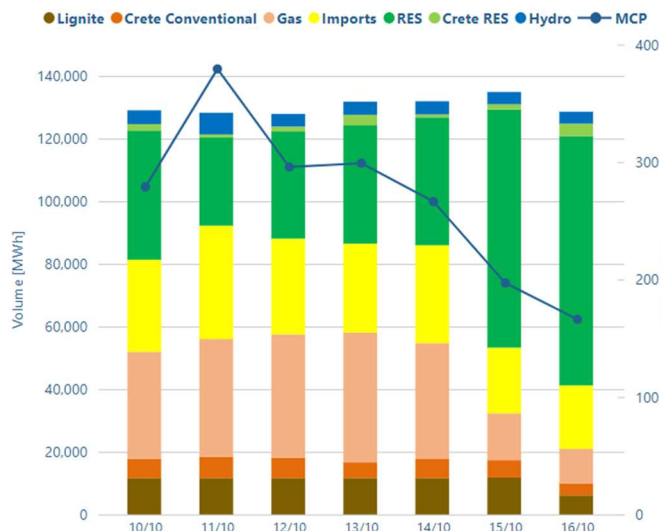
Day Ahead Electricity Market-Greek Bidding Zone

Week 42

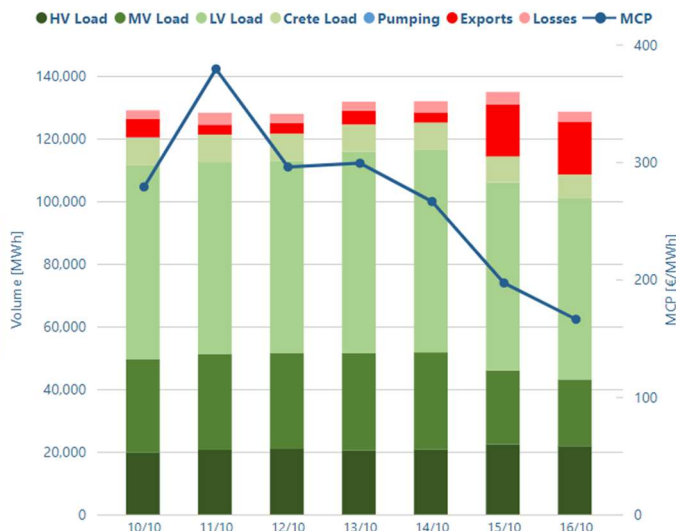
10/10/2022

16/10/2022

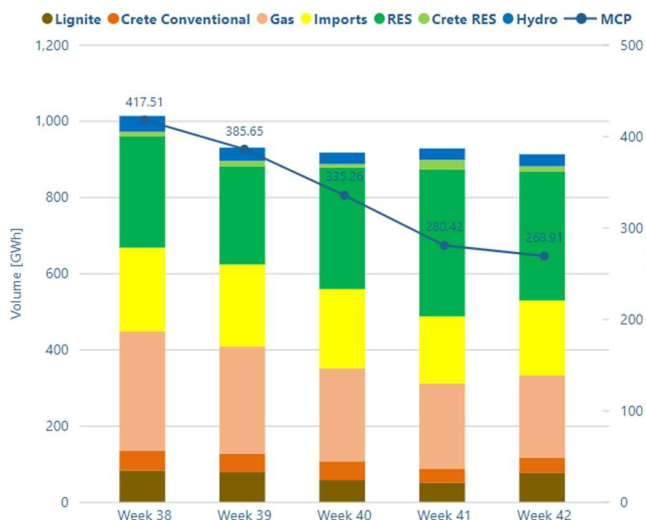
Daily Supply Mix



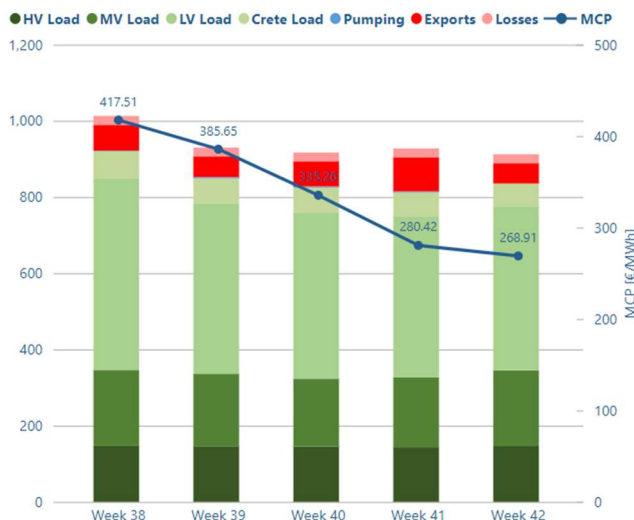
Daily Demand Mix



Weekly Supply Mix



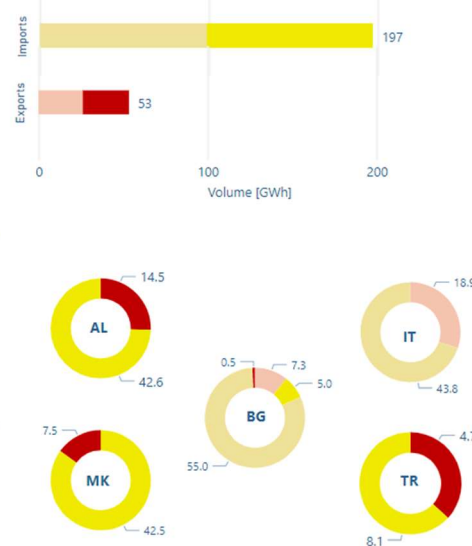
Weekly Demand Mix



Unmatched orders & traded volume



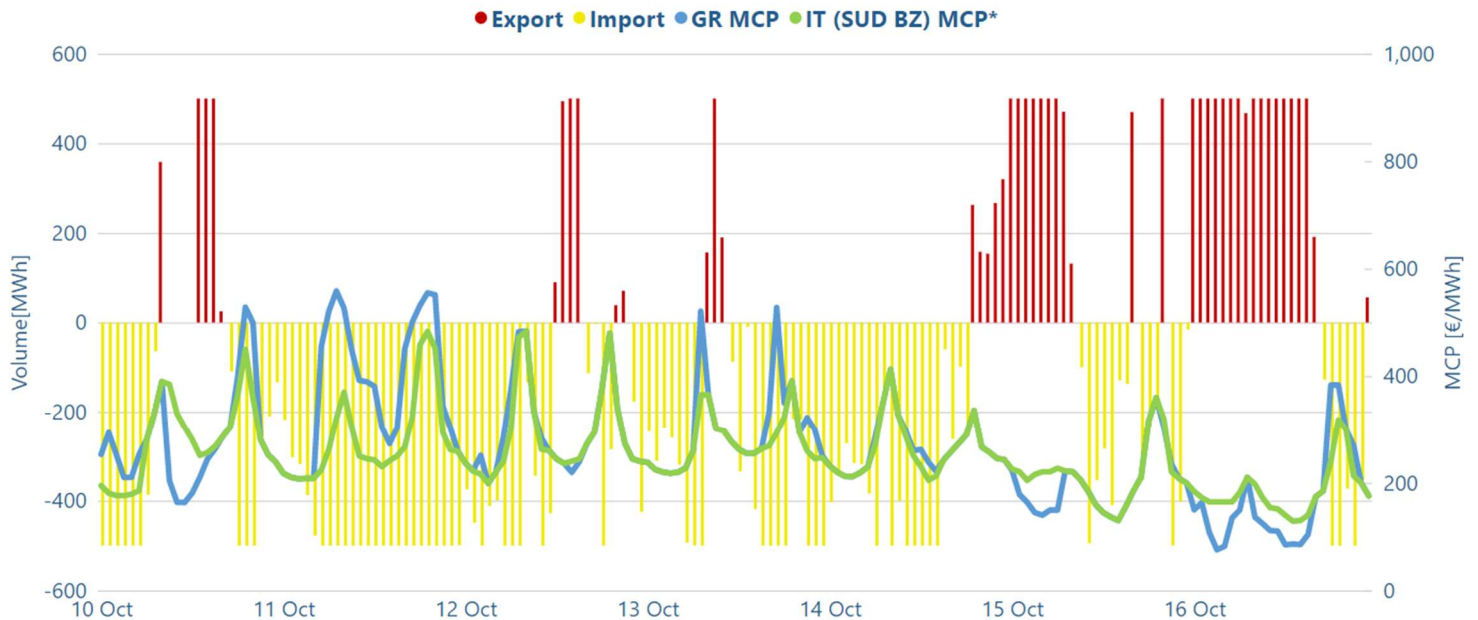
Cross Borders Volumes



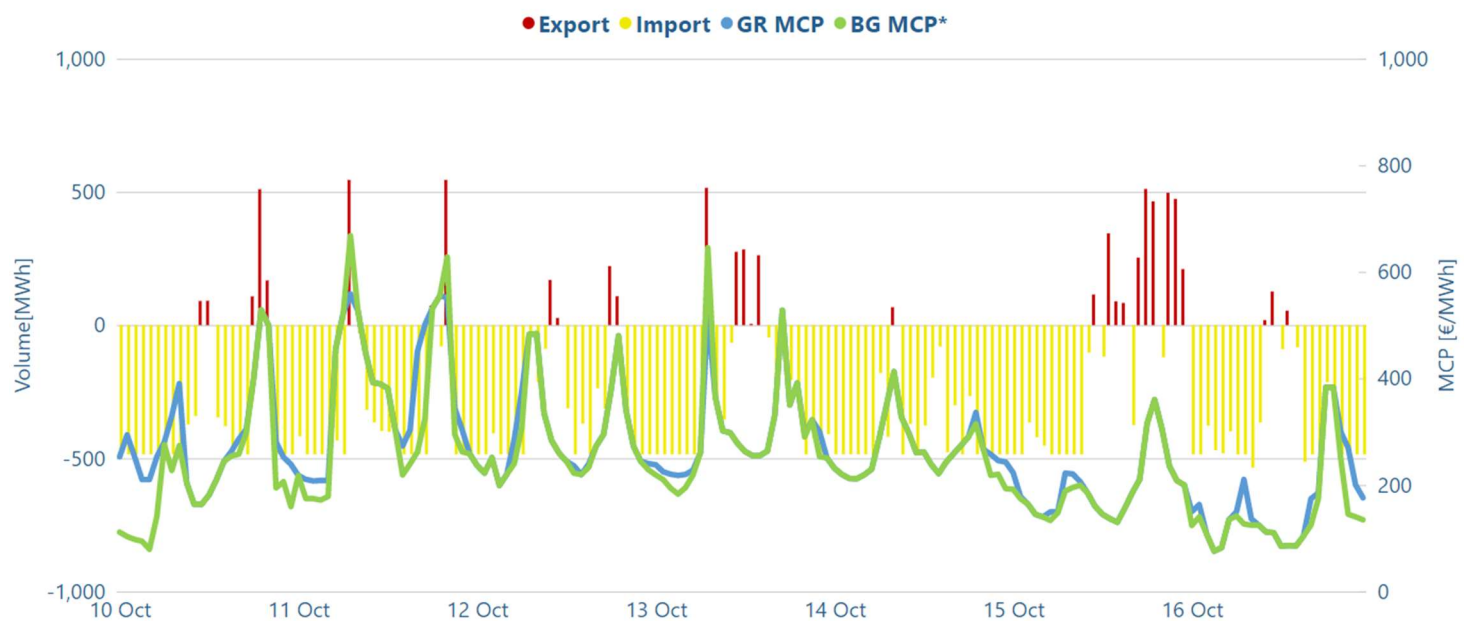
*The unmatched orders include all orders that have not been included in the algorithm (excluding block orders for sell side)

Exports-Implicit Allocation Imports-Implicit Allocation

Market Coupling Cross Border Flow

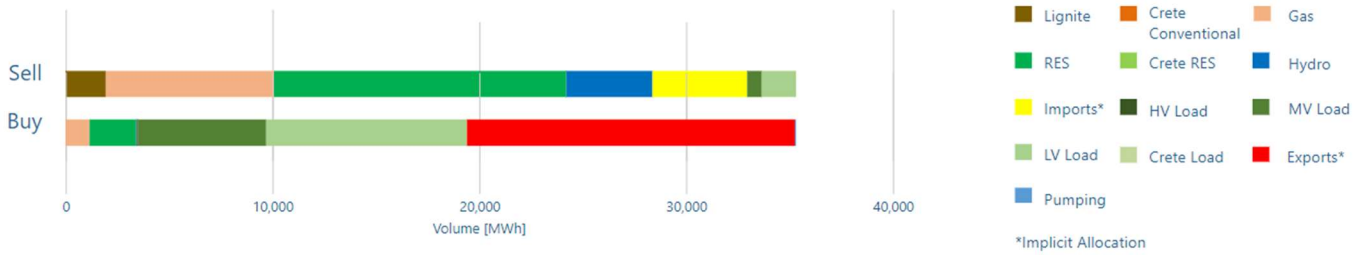


*Datasource for IT (SUD BZ) MCP: <http://www.mercatoelettrico.org/En/Esitu/MGP/EsituMGP.aspx>

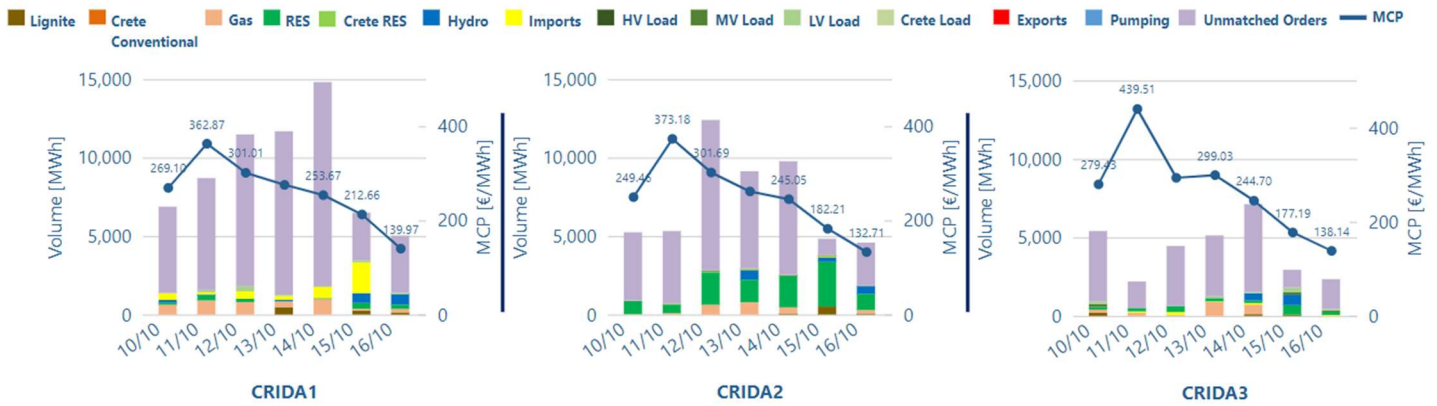


*Datasource for BG MCP: <https://ibex.bg/markets/dam/dam-market-segment/>

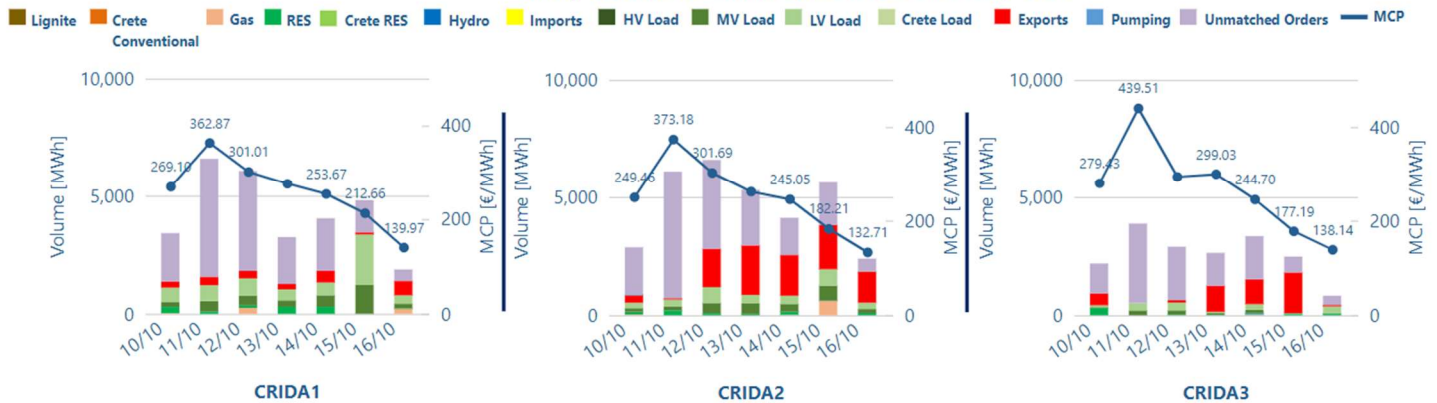
Aggregated traded volume



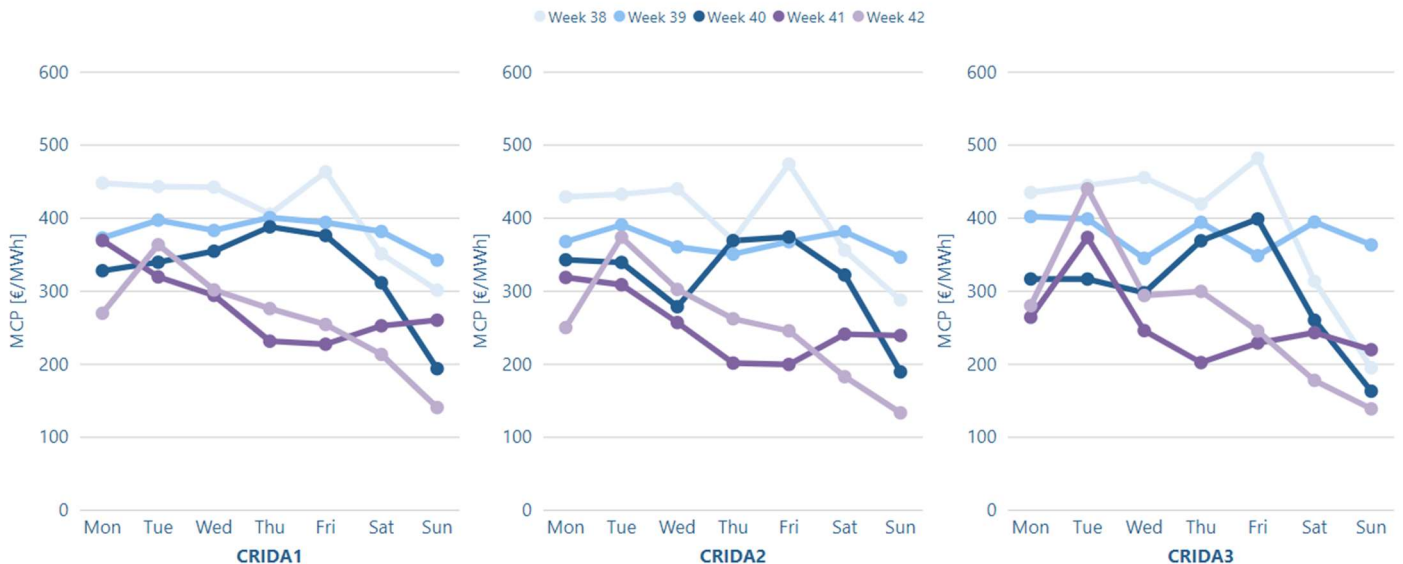
MCP, Volume & unmatched orders for Sell Side

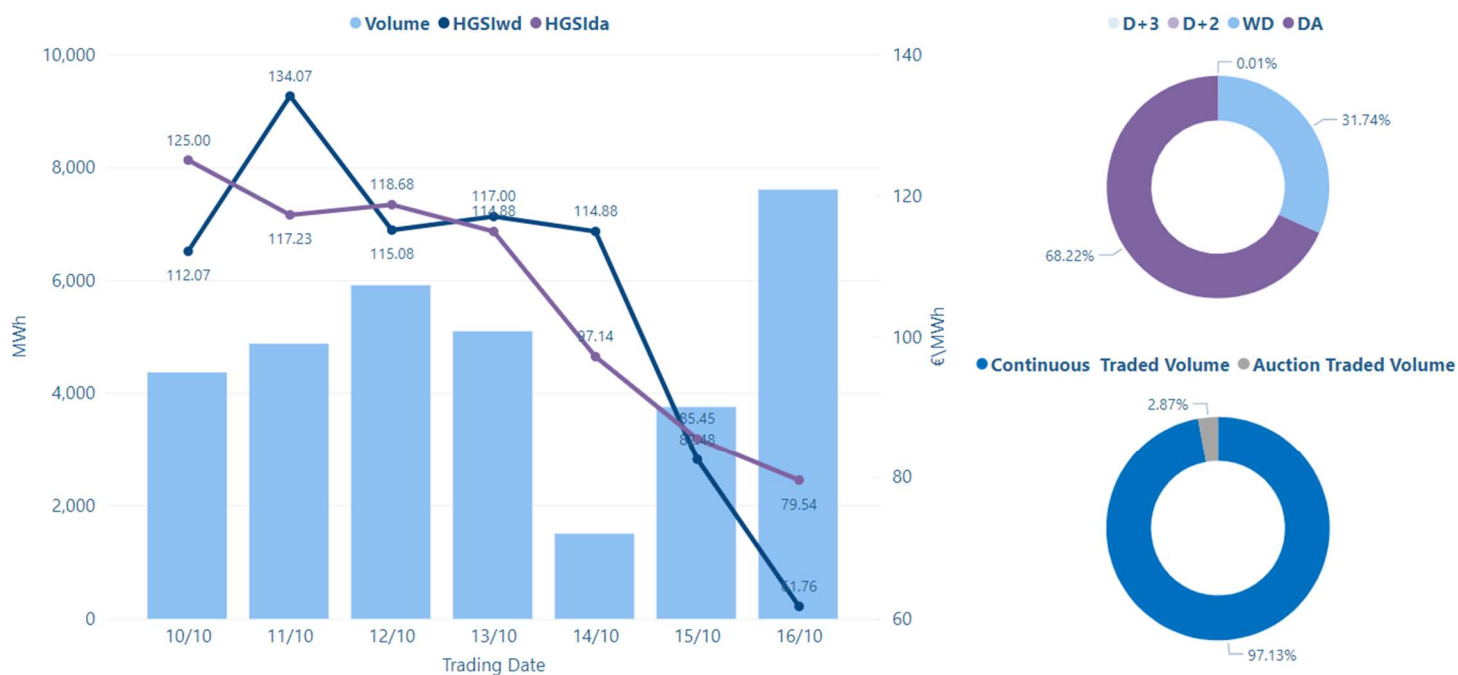


MCP, Volume & unmatched orders for Buy Side



MCP per Weekday





Volume, Closing, Min & Max Prices per Trading Date

